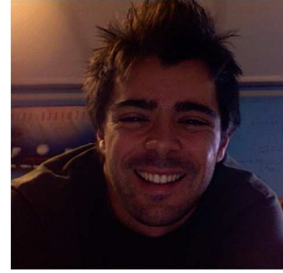


Guida Roberto



Position: Post Doc

Period covered: June 2008 – December 2008

I Scientific Work

Gamma Ray Burst (GRBs) and cosmology.

The Amati relation within the fireshell model for GRBs.

Hubble diagram of GRBs calibrated with different cosmological models.

II Conferences and educational activities

Conferences and Other External Scientific Work

XIII Brazilian School of Gravitation and Cosmology, Mangaratiba (Brazil), 20 luglio- 2 agosto, 2008.

III 2007-2008 List of Publications

1 - Caito L., Bernardini M. G., Bianco C. L., Dainotti M. G., Guida R., Ruffini R., "GRB060614 analysis within the fireshell" model", submitted to Astron. & Astrophys.

2 - Guida R., Bernardini M. G., Bianco C. L., Caito L., Dainotti M. G., Ruffini R., "The Amati relation in the fireshell" model", Astron. & Astrophys. 487, L37, 2008.

3 - Bernardini M. G., Bianco C. L., Caito L., Dainotti M. G., Guida R., Ruffini R., "GRB970228 and a class of GRBs with an initial spikelike emission", Astron. & Astrophys. 474, L13, 2007.

4 - Dainotti M. G., Bernardini M. G., Bianco C. L., Caito L., Guida R., Ruffini R., "GRB060218 and GRBs associated with Supernovae Ib/c", Astron. & Astrophys., 471, L29, 2007.